

QRN-1620S

16CH 8MP NVR with PoE switch



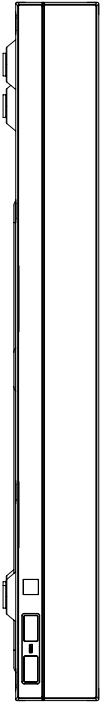
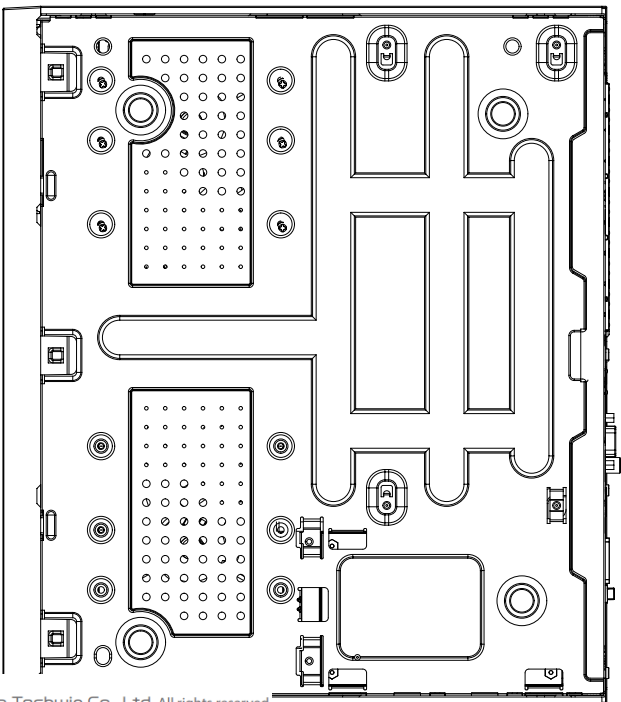
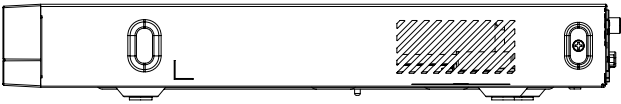
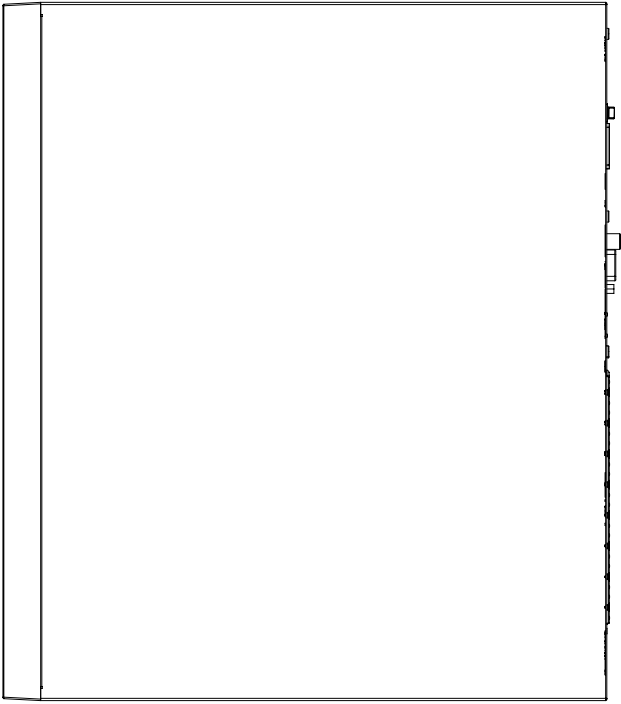
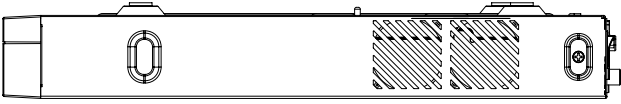
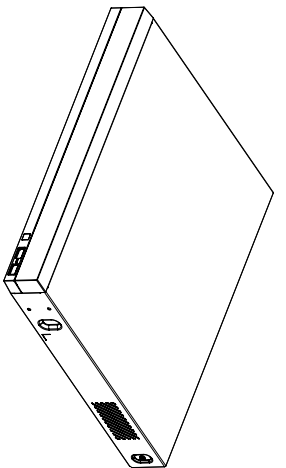
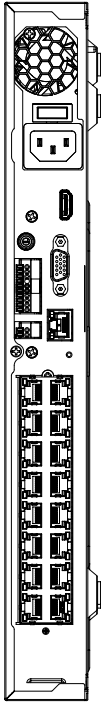
Key Features

- Up to 16CH 8MP resolution
- H.265, H.264, MJPEG codec
- WiseStream support
- 128Mbps network camera recording
- Dual track recording
- Plug & play by 16 PoE port
- Max. 2 HDDs(Up to 12TB)
- HDMI, VGA output
- P2P service(QR code)

Display		
Network camera	Inputs	Max. 16CH
	Resolution	8MP ~ CIF
	Protocols	Wisenet, ONVIF
Decoding	Local Display	[Dual Display] HDMI: 3840 x 2160, 1920x1080, 1280x720 VGA: 1920x1080, 1280x720
	Resolution	8MP(60fps), 5MP(90fps), 3MP(120fps), 2MP(240fps), 720p(480fps), D1(480fps)
Performance		
Record	Compression	H.265, H.264, MJPEG
	Recording Bandwidth	Max. 128Mbps
	Resolution	8MP ~ CIF
	Mode	Normal, Schedule(Continuous/Event), Event (Pre/Post), Dual track Recording
	Event Trigger	Alarm Input, Video Loss, Camera Event(Alarm, MD, Video Analytics, Defocus)
	Event Action	e-Mail, PTZ Preset, Alarm Out, Buzzer, Monitor Out
Search & Play	Playback Bandwidth	Max. 32Mbps(16CH simultaneously)
	User	Max. 4 Users (Local 1, Remote 3)
	Simultaneous playback	Max. 16CH(Network) Max. 8CH(Local Monitor)
	Fisheye Dewarping	WEB / CMS / Mobile
Storage	Supported HDD	Up to 6TB
	HDD Slot	SATA 2ea(Max. 12TB)
Backup	File backup	BU/Exe(GUI), JPG/AVI(Network)
	Function	Multi channel(Upto 8CH) Play, Date-Time/Title display
Network		
Protocol	IPv4, IPv6, TCP/IP, UDP/IP, RTP (UDP), RTP (TCP), RTSP, NTP, HTTP, DHCP (Server, Client), PPPoE, SMTP, ICMP, IGMP, ARP, DNS, DDNS, uPnP, HTTPS, SNMP, ONVIF (Profile-S), SUNAPI(Server, Client)	
DDNS	Wisenet DDNS	
Audio	Input/Output	16CH(network)
	Compression	G.711, G.726, AAC(16/48KHz)
	Audio Communication	2-Way
Max Remote Users	Search(3), Live Unicast(10), Multicast(20)	
Security	HTTPS(SSL) Login Authentication Digest Login Authentication IP Address Filtering User access log 802.1X Authentication(EAP-TLS, EAP-LEAP) Device Certificate(Hanwha Techwin Root CA)	
Viewer Software	SSM, Webviewer, Smart Viewer, Wisenet mobile Support SDK/CGI(SUNAPI) for integration to 3'rd party VMS	
Functions		

Camera Setup	Item	IP address, Add profile edit, Bitrate, Compression, GOP, Quality, Camera MD setup, Wisestream, Dynamic GOV/FPS, VA Setup Camera video setup (Simple focus, Brightness/Contrast, Flip/Mirror, IRIS, WDR, D&N, SSNR, Shutter, SSSDR, DIS), Fisheye Dewarping Mode, Hallway View Setup, Camera Webpage
PTZ	Control	Via GUI, Webviewer
Smart phone	Support Model	iOS, Android
	Protocol Support	RTP, RTSP, HTTP, HTTPS, CGI(SUNAPI)
	Control	Live(Multi-Profile Support), Playback
	Max. Remote Users	Search(3), Live Unicast(10)
Redundancy	ARB	Support
Easy configuration		P2P(QR code)
Interface		
HDMI		1EA
VGA		1EA
Audio		Out(1EA, RCA, Line)
Ethernet		RJ-45(10/100/1000BASE-T) x 1 RJ-45(PoE+) x 16
Alarm		In 4EA, Out 2EA
USB		2EA(Front 2)
Power inlet		AC 1EA
System		
System Control		Mouse, IR remocon, Web
Language		English, French, German, Italian, Spanish, Russian, Turkish, Polish, Dutch, Swedish, Czech, Portuguese, Danish, Rumanian, Serbian, Croatian, Hungarian, Greek, Norwegian, Finnish, Korean, Chinese, Japanese, Thai, Vietnamese
Environmental		
Operating Temperature		0°C to +40°C(32°F to 104°F)
Operating Humidity		20% ~ 85% RH
Electrical		
Power Input		100~240VAC±10%
Power Consumption		Max. 158.2W(2HDDs, PoE on) Max. 34.6W(2HDDs, PoE off)
PoE Budget		Max. 130W
Mechanical		
Color / Material		Black / Metal
Dimension (WxHxD)		W370.0 x H44.0 x D320 mm (14.57" x 1.73" x 12.6") (1U)
Weight		2.79Kg (6.15lb)

- The latest product information / specification can be found at hanwha-security.com
- Design and specifications are subject to change without notice.
- Wisenet is the proprietary brand of Hanwha Techwin, formerly known as Samsung Techwin.



3	파생 MODEL2	
2	파생 MODEL1	
1	BASIC MODEL	'20.01.28
No.	MODEL NAME	QRN-16200

Unit:mm[inch] SCALE:1/1