



## ASE5300-CW

SiPass®  
integrated

## CCTV capability on a SiPass integrated workstation license

- 
- Display of CCTV images directly within SiPass integrated
  - Configuration and control of CCTV operations from within SiPass integrated

The ASE5300-CW provides the ability to use the SiPass integrated workstation as a CCTV monitoring station. In combination with a video capture card, it is possible to view live CCTV images, control camera movement, and switch cameras conveniently using your SiPass integrated workstation.

## Features

---



- Zoom (In / Out), Focus (Near / Far), Iris (Open / Close), Pan Tilt Speed
- Live image on-screen
- Ability to record, save and play presets and patterns directly from the SiPass integrated graphical user interface (GUI)
- Define monitors, cameras and auxiliaries
- View specific CCTV images in response to system alarms and other status changes
- Configurable event-task routines that generate CCTV activity
- CCTV actions directly from graphical maps

## Description

---

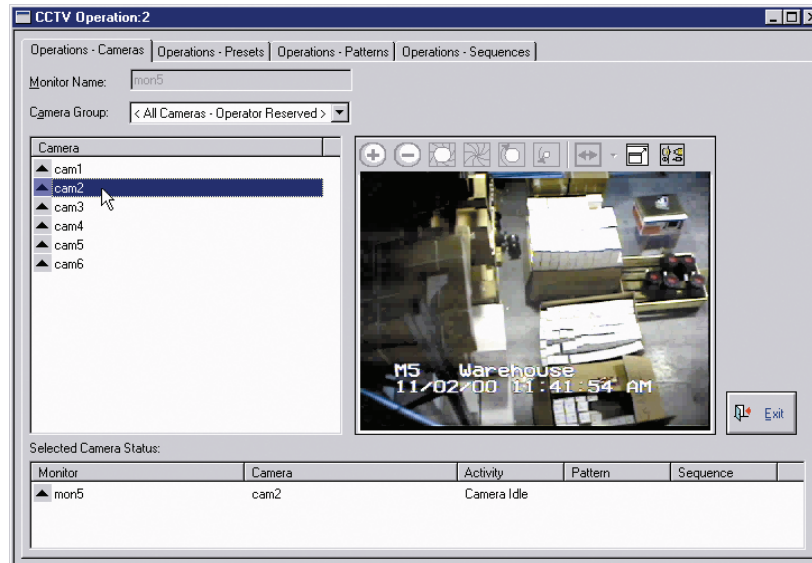
The ASE5300-CW transforms your standard SiPass integrated client into an interactive CCTV workstation that enables you to control the operation of CCTV components from the SiPass integrated GUI.

Through the use of a video capture card, you can display high-quality CCTV images directly from the SiPass integrated GUI. You can also switch camera images to different monitors, and create and view presets, patterns and sequences. When used in conjunction with the advanced alarm handling mechanism in SiPass integrated, you can display presets, patterns, or sequences on any monitor when the security at your facility has been breached.

Using the database partitioning in SiPass integrated, you can govern exactly which operators can use the CCTV functions and the level of control they have over each CCTV device.

To ensure that every facility using CCTV runs as efficiently as possible, CCTV actions can be run directly from graphical maps.

## Specification



CCTV GUI

Supported Siemens matrix switchers:

- SIMATRIX 164
- SIMATRIX 648
- SIMATRIX SYS

Supported third-party matrix switchers (requires connection license):

- Pelco 9760
- Pelco 9740
- Pelco CM6700
- Pelco CM6800

Note: Live images using the SiPass integrated GUI are dependent upon a Windows compatible video capture card being installed.

## System Requirements

| Type       | Part no       | Designation     |
|------------|---------------|-----------------|
| ASL5000-SE | 6FL7820-8AA10 | SiPass Standard |
| ASL5000-OA | 6FL7820-8AA20 | SiPass Optima   |

The interface, which enables the connection of Siemens SIMATRIX matrix switcher, is standard of the SiPass above mentioned core packages.

## Details for ordering

To order the SiPass integrated software extensions, you must first complete a software license order form. Please contact your SiPass integrated supplier for further information.

| Type       | Part no       | Designation  |
|------------|---------------|--|
| ASE5300-CW | 6FL7820-8AE01 | CCTV capability on a SiPass integrated workstation license |

Issued by  
Siemens Building Technologies  
Fire & Security Products GmbH & Co. oHG  
D-76181 Karlsruhe  
[www.buildingtechnologies.siemens.com](http://www.buildingtechnologies.siemens.com)

© 2009 Copyright by  
Siemens Building Technologies  
Fire & Security Products GmbH & Co. oHG  
Data and design subject to change without notice.  
Supply subject to availability.

---

Document no. **A24205-A335-B132**  
Edition 20.08.2009